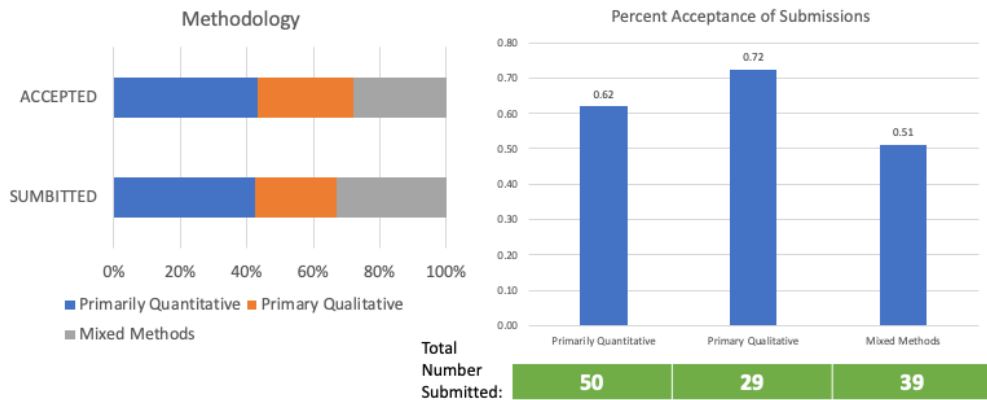


Statistics for Abstract submissions and Acceptances SABER 2020

These data are based on questions from the abstract submission form from the original submission timeframe (for short talks and long talks only).

Methodology Used



We asked respondents to identify the methods used: primarily quantitative, primarily qualitative, or mixed methods.

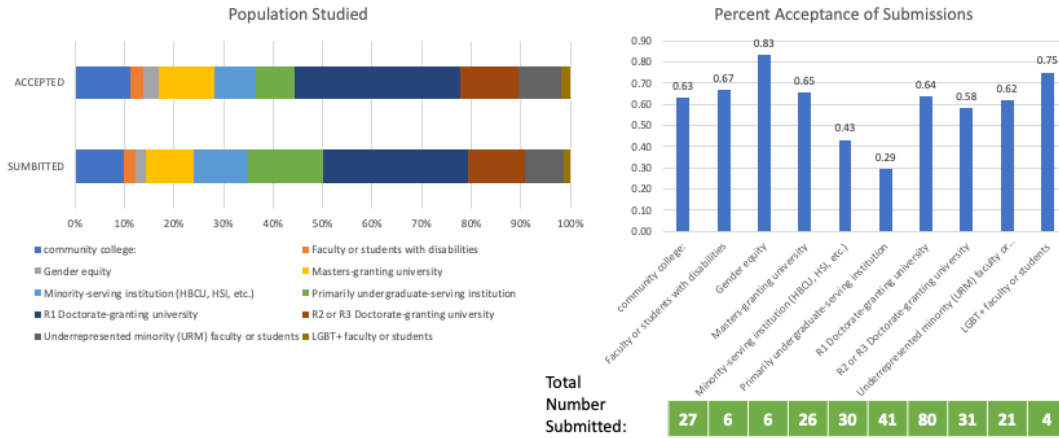
The graph on the left shows the mix of methodologies of those who submitted compared to those who were accepted for a talk.

The graph on the right shows what percentage of each submission type was chosen for a talk.

The green bar at the bottom shows the total number of submissions in each category.

SUMMARY: we accepted slightly more qualitative talks than quantitative.

Population Studied



We asked respondents to identify the population studied in their research. Many respondents chose more than one category. Each categories was tallied by number of times mentioned.

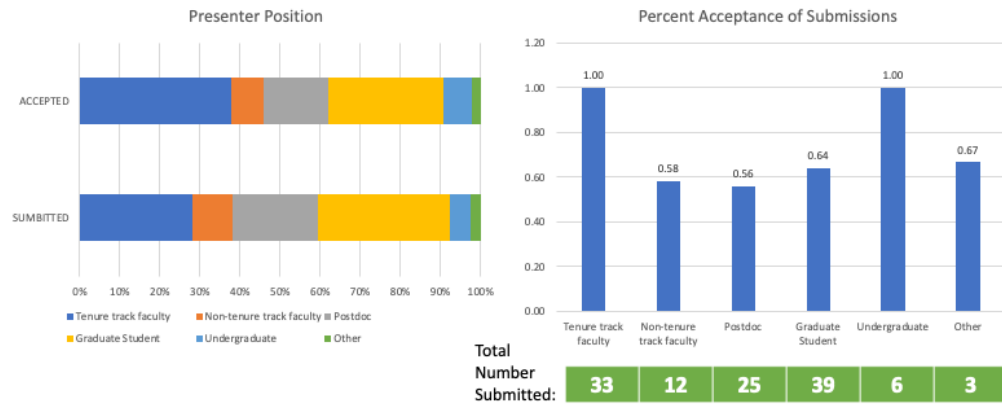
The graph on the left shows the mix of populations studied of those who submitted compared to those who were accepted for a talk.

The graph on the right shows what percentage of each submission type was chosen for a talk.

The green bar at the bottom shows the total number of submissions in each category.

SUMMARY: That data is pretty mixed. There appears to be an overrepresentation of gender equity and maybe LGBT+ populations, and an underrepresentation of primarily undergraduate-serving institutions and minority-serving institutions.

Presenter Position



We asked respondents to identify the primary position of the presenting author.

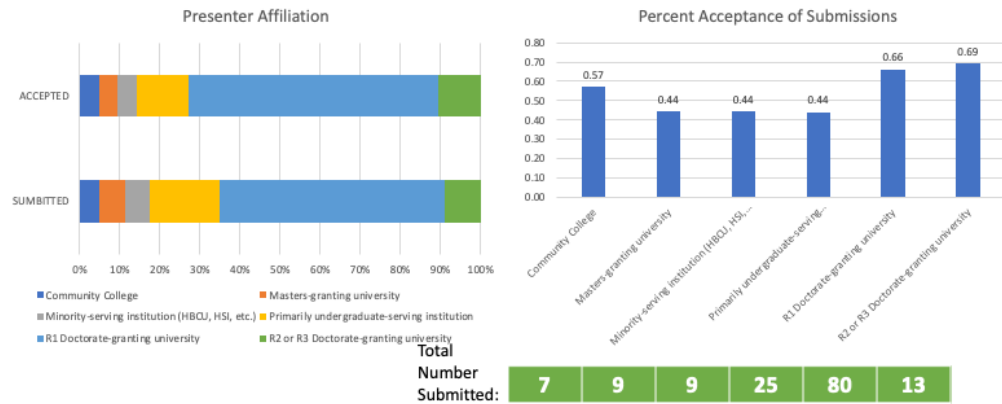
The graph on the left shows the mix of presenter types of those who submitted compared to those who were accepted for a talk.

The graph on the right shows what percentage of each submission type was chosen for a talk.

The green bar at the bottom shows the total number of submissions in each category.

SUMMARY: Tenure-track faculty and undergraduates were more represented than other categories.

Presenter Affiliation



This one is very similar to the last. The question asked respondents if the presenting author was affiliated with any of the listed groups. They were free to choose more than one. Number of times mentioned was used to tally the categories.

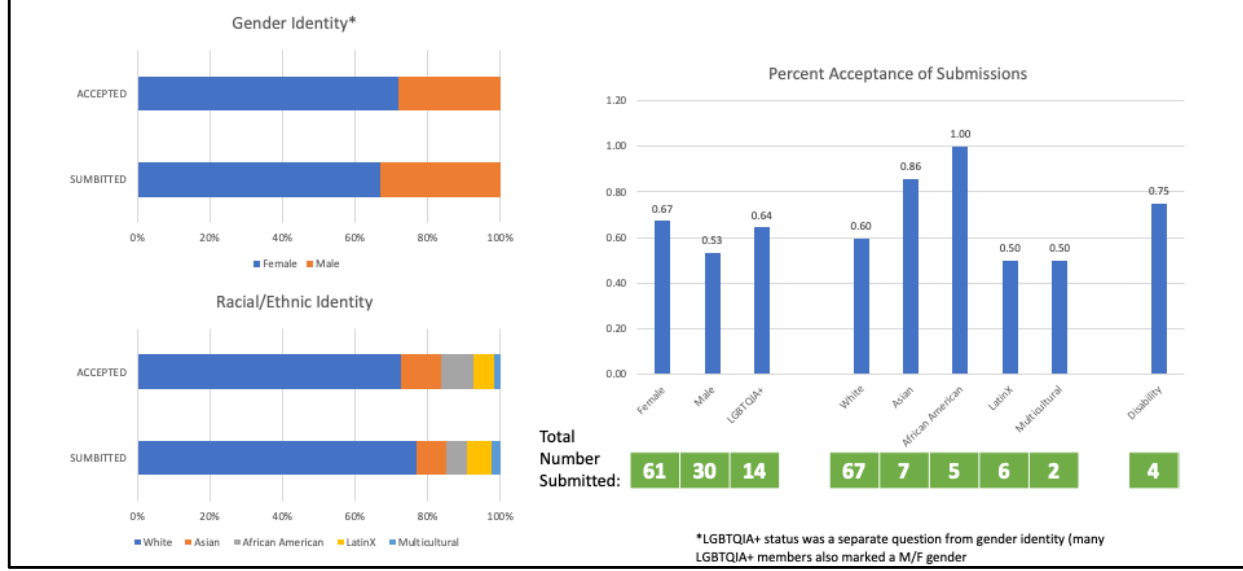
The graph on the left shows the mix of affiliations of those who submitted compared to those who were accepted for a talk.

The graph on the right shows what percentage of each submission type was chosen for a talk.

The green bar at the bottom shows the total number of submissions in each category.

SUMMARY: Categories seem equally represented with perhaps a slight favor toward R1 and R2 affiliations, R1 being the most commonly reported.

Demographics of Presenters



We asked respondents an open-ended demographics question: “For each item listed below, please briefly provide demographic information about the presenting author. You may choose to not disclose any or all requested information.

- Gender identity
- Racial/ethnic identity
- Disability status
- LGBTQIA+ identity”

Respondents were free to answer as many or as few of the categories as they wanted to. Many respondents did not answer all categories and many others left it blank. But, from those who reported any of the above, we recorded it. Also note, for gender identity, many in the LGBTQIA+ category identified a Male/Female gender along with their belonging to the latter group. All mention of any of them was counted in the tally.

The top left graph shows the reported male or female gender (including any who also indicated LGBTQIA+) of those who submitted compared to those who were accepted for a talk.

The bottom left graph shows the ethnic/racial affiliation of those who submitted compared to those who were accepted for a talk.

The graph on the right shows what percentage of each submission type was chosen for a talk.

The green bar at the bottom shows the total number of submissions in each category.

SUMMARY: For gender, more females and LGBT+ individuals were chosen for talks than male individuals, but the disparity is small. For racial identity, a higher percentage of African Americans and Asians were chosen over whites, LatinX, and multicultural. And a good representation of those who disclosed that they had a disability was seen.